



**City of Memphis**

## Public Works – 5 Year Resurfacing Management Plan

### *Street Maintenance Department*

Director: Dwan Gilliom

Deputy Director: Robert Knecht

Administrator: Ossie Boddie



## **Public Works 5 year Resurfacing Management Plan**

**Years: 2015 to 2020**

Overview: It is the responsibility of Public Works, Street Maintenance to maintain all public streets and Right of Ways (ROWs) within the City of Memphis limits. This includes the evaluation and selection of such streets as candidates for resurfacing. Resurfacing is a process that typically involves the removal and replacement of the top 1.5 inch layer of asphalt. The goal in providing this service is to ensure the integrity of the street surface in accordance with acceptable standards and to extend the useful life of the street.

Public Works is one of a few municipalities who owns and operates its own asphalt plant. This is a tremendous benefit to the City as we are not dependent on private companies in order to resurface streets. Additionally it allows for greater controls of the cost to perform this function as well as the quality of the finished product. As per our resurfacing management plan the Street Maintenance can resurface, under ideal conditions, up to 142 lane miles per year, however the length of Memphis's paving season and other weather related delays influence and limit our ability to resurface. In consideration of this Street Maintenance's annual goal is to resurface 107 lane miles per year. Funding for the Street Maintenance resurfacing operations is obtained from the City's Capital Improvement Project (CIP) Budget. The funding allocated for Asphalt/Paving was \$11.5 M in FY11, \$6.5 M in FY12, \$6.5M in FY13, \$8.5 M in FY14 and \$9.5M is currently (FY15) dedicated to Street Maintenance for "in-house" resurfacing operations. Funding in excess of that amount is used to contract further resurfacing work, generally performed as CIP resurfacing contracts.

Included with the resurfacing management is Public Works five (5) year paving plan for calendar years 2014 to 2019. Calendar years are used, as this is the best method to plan paving in conjunction with the actual paving season. This is only a planning tool which has identified and prioritized future streets for resurfacing. In order to achieve the goals set in each year, sufficient funding must be approved and allocated. Additionally fluctuations in the cost of materials needed to perform resurfacing can further impact funding availability during the course of the fiscal year. The most significant impact is the cost of asphalt cement, which is subject to significant fluctuations as it is a crude oil derivative. Attached with this plan is a historical overview which

shows the monthly asphalt cement cost for the past years using the industry standard known as the bituminous materials index (BMI); from this information the trend for asphalt cement cost analysis is performed to project future costs.

In regards to the 5 year plan, the 2015 goal is to resurface a total of 332.52 lane miles. This number represents approximately 153 lane miles of uncompleted paving from the 2014 paving season. Based on the current BMI, this equates to an average cost of approximately \$82,400 per lane mile for 2014. While this unit cost is being used to provide total cost representation, the actual cost may vary. Using this same methodology, the following table is provided which details the projected future paving costs.

<b>PAVING YEAR</b>	<b>PROJECTED BMI</b>	<b>LANE MILE SCHEDULED</b>	<b>COSTS (\$MILLION)</b>
2015	\$581	332	\$27.4
2016	\$639	232	\$21.0
2017	\$702	151	\$15.1
2018	\$912	117	\$15.2
2019	\$1003	123	\$17.5
2020	\$1104	104	\$16.3

Table1. Projected Future Paving Costs

The approved FY15 CIP Paving budget which funds 50% of the 2014 and 2015 paving years is \$9.5M, therefore it is projected that approximately 217 lane miles of identified streets in 2015 will not be paved as planned, consequently those streets will be moved to the next paving year and so forth.

## **Guidelines and Procedures**

### **I. Resurfacing**

#### **a. Rating System (PASER – Pavement Surface Evaluation and Rating)**

##### **i. Paving defects are described by the following factors.**

1. Shrinkage and Localized Cracking
2. Longitudinal and Transverse Cracking
3. Raveling/Abrasion/Pitting
4. Rutting
5. Shoving
6. Edge Failure
7. Potholes/Pavement Failure
8. Ponding/Poor Drainage

##### **ii. Paving defects are assigned a surface rating from 0 to 10 based on the following rating system (see Appendix for Inspection Report Form):**

##### **1. Conditional Rating**

- a. Excellent Condition – 10
- b. Excellent Condition – 9
- c. Very Good – 8
- d. Good Condition – 7
- e. Good Condition – 6
- f. Fair Condition – 5
- g. Fair Condition – 4
- h. Poor Condition – 3
- i. Very Poor Condition – 2
- j. Failure Condition – 1

##### **iii. Assessment of pavement condition can be performed by any qualified individuals including Street Maintenance Foremen, Engineering Coordinator, Supervisors, Managers and Administrators.**

##### **iv. Data generated and collected from the field is then inputted into Street Maintenance GIS system.**

##### **v. Previous year's available historical records have been incorporated into the GIS system, including studies performed by University of Memphis dated 2004 and 2007.**

#### **b. Methodology – Street should be assigned to the schedule by the following**

method:

- i. Evaluation: Evaluate a location based on a request that was received or by routine inspection. The Inspection Checklist should be utilized during the evaluation.
  - ii. Assign Pavement Condition Rating: Assign a pavement condition to the location based on the ratings listed section I.a.ii.
  - iii. Assign Geographic Zone: Assign the pavement location to a zone based on the geographic location. (See Appendix for Map of Zones):
  - iv. Assign Pave Year: Assign the pavement location a potential paving year based on pavement condition ratings and arterial type.
  - v. Priorities shall be established as follows: Finish any missing final overlays, Major Arterials, Minor Arterials, Collector Roads, and Residential Streets. In general more benefit to users is on more heavily traveled roadways. Then prioritization would be sorted by year and then within each year, by condition (from worst to best). Locations rated 3 or less will be eligible for major overlay or mill and overlay. Locations rated 4 and 6 would be eligible for thin overlay or crack sealing. Locations rated 7 or greater would only receive periodic inspection.
  - vi. Every effort is made to ensure equitable distribution of resurfacing among the City Council Districts.
  - vii. Add the location to schedule if conditions warrant.
- c. Permits - The City of Memphis Street Maintenance Asphalt Plant
- i. Asphalt Plant is permitted for one hundred thousand tons (100K tons) production annually. Resurfacing period can be performed during the months of March thru November and is prohibited during the winter months December thru February.
  - ii. Street Maintenance has a set annual goal to produce 75,000 tons annually for paving operations which equates to approximately 107 lane-mile of resurfacing. (700 tons produces approximately one lane mile at an inch and half thick asphalt).
  - iii. This goal is subject to funding availability, material costs and weather restrictions.
- d. Design asphalt mix used during resurfacing work is in accordance with the City of

Memphis Standard Construction Specifications Section 02741. Design mix number one, at a minimum, is bi-annually tested. Samples collected from the asphalt plant are sent to TDOT laboratory for gradation breakdown and mix composition is validated for correct tolerances. This mix design is known as 411E.

- e. Any unplanned emergency resurfacing work and uncooperative weather condition may significantly impact the paving schedule and alter, delay and interfere with the established schedule.
- f. Procedures
  - i. A minimum of six (6) months prior to the start of work, a milling/paving list will be sent to Environmental Services, Drain Maintenance & Heavy Equipment Services to locate manholes and make repairs to the public drainage and sewer system as needed. Repairs should be complete at least sixty (60) days prior to the start of paving.
  - ii. A minimum of two (2) months prior to the start of work, a paving list will be sent to all dry utility companies (MLGW, Telephone Company, Fiber Optic, Cable etc.) for review for project conflicts. Streets affected shall be noted and returned.
  - iii. Engineering is informed to identify traffic loop locations and to prepare and schedule installation striping for newly paved surface.

- iv. The milling/paving list is edited and a final list is compiled for distribution. The list of streets rescheduled due to project conflicts will be added to the next paving list after construction is complete.
- v. A contractor group resurfacing list is generated, if sufficient funding is available.
  - 1. The streets selected for this list will come from the current year.
  - 2. If there are insufficient lane miles in the current year, then streets identified in the next year will be used.
  - 3. Street selection for the CIP contract resurfacing list will be determined so as to maximize efficiency of resurfacing.
- vi. The Shift Supervisor and/or paving crew Foreman will inspect all streets prior to milling/paving and count all existing manholes, mark locations on the curbs or shoulders of the streets and keep a list of locations. A copy of the list will be forwarded to the Street Maintenance Manager.
- vii. Two paving crewman will be assigned to list and check all manholes during street paving. Manholes damaged during milling or covered during paving will be replaced or uncovered immediately. A copy of the list will be forwarded to the Street Maintenance Manager.
- viii. The Shift Supervisor and/or Foreman will inspect manholes on each street following paving. Manholes are to be field inspected to insure that none are covered with asphalt or were damaged during milling. Damaged or covered manholes are to be replaced or uncovered immediately. A copy of the list will be forwarded to the Street Maintenance Manager.
- ix. All milling/paving activities shall be the responsibility of the Street Maintenance Manager. Upon the completion of a street paving project the Street Maintenance Administrator will field inspect the streets for quality and workmanship, and to correct any problems caused as a result of paving.

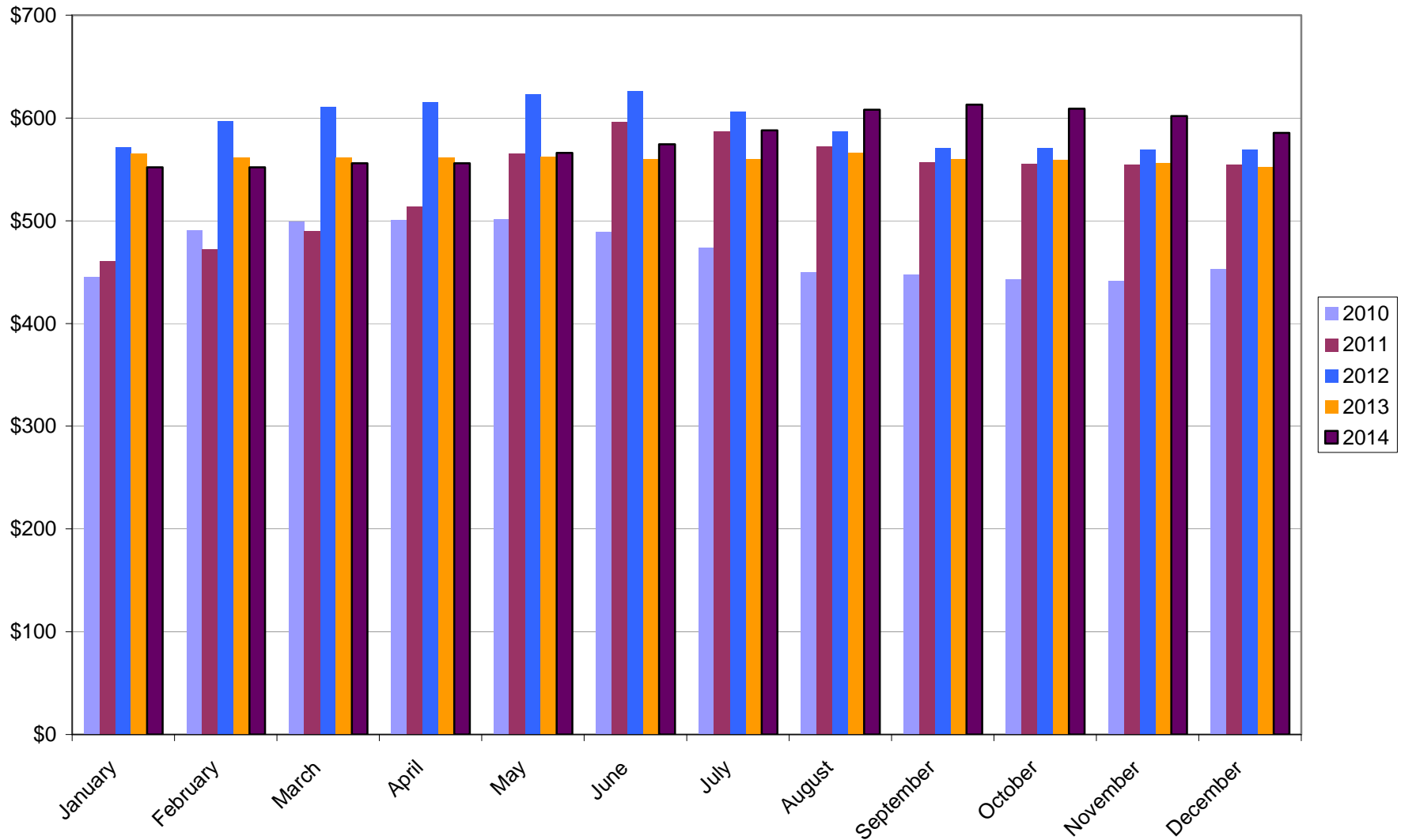
- g. Safety work should be done before or immediately following the paving work in order to minimize the public's exposure to existing or potentially safety problems. Schedule work requires consideration of the following:
  - i. the need to mitigate accident problems
  - ii. the potential for future accidents
  - iii. the extent and complexity and staging of the work involved



**Bituminous Index (\$ per ton)**

	January	February	March	April	May	June	July	August	September	October	November	December	Average	% Change
2000	150.00	163.57	173.93	188.93	188.93	189.64	189.64	189.64	188.93	188.93	186.79	186.79	182.14	
2001	183.57	175.00	174.62	170.00	167.31	163.08	156.15	149.62	147.31	148.46	146.54	145.38	160.59	-12%
2002	143.46	138.85	141.92	151.54	166.92	175.38	177.69	178.46	178.46	178.85	178.85	178.46	165.74	3%
2003	178.46	193.08	201.92	201.92	199.62	187.69	181.92	175.38	177.69	178.85	178.08	178.08	186.06	12%
2004	178.08	178.08	178.08	175.38	176.15	187.31	187.92	192.92	194.17	197.50	197.08	192.92	186.30	0%
2005	189.58	188.75	188.33	189.58	189.58	190.83	194.58	199.17	227.08	235.42	237.08	232.08	205.17	10%
2006	239.17	245.42	260.00	278.75	310.00	360.83	377.31	390.00	391.15	380.38	354.23	331.54	326.57	59%
2007	323.85	322.00	316.62	313.15	305.62	301.92	302.69	302.69	302.54	297.92	292.15	294.85	306.33	-6%
2008	306.54	326.15	345.00	363.62	401.54	491.15	604.62	721.15	742.31	684.23	616.54	503.85	508.89	66%
2009	455.83	440.00	392.31	383.85	362.27	354.09	391.82	399.09	397.27	379.55	384.09	425.00	397.10	-22%
2010	445.45	490.91	499.55	500.45	501.36	489.55	474.09	450.00	447.27	442.73	441.36	453.18	469.66	18%
2011	460.45	472.27	490.45	514.09	565.45	596.36	586.82	572.73	556.82	555.45	554.55	554.55	540.00	15%
2012	571.36	596.82	610.91	615.45	623.18	625.91	605.91	587.27	570.91	570.50	569.50	568.50	593.02	10%
2013	565.50	561.50	561.50	561.50	562.50	560.00	560.00	566.00	560.00	559.50	556.50	552.00	560.54	-5%
2014	552.00	552.00	556	556	566	574.50	588.00	608.00	613.00	609.00	602.00	585.50	580.17	4%

### Bituminous Index (2010-2014)



**PAVEMENT/GUARDRAIL/TREE TRIMMING INSPECTION CHECKLIST**

**INSPECTOR NAME:** \_\_\_\_\_  
**DATE OF INSPECTION:** \_\_\_\_\_  
**PAVEMENT LOCATION:** \_\_\_\_\_  
**COUNCIL DISTRICT:** \_\_\_\_\_  
**MAP PAGE:** \_\_\_\_\_  
**MCSC #:** \_\_\_\_\_  
**LAST PAVED:** \_\_\_\_\_



	CONDITION RATING	COMMENTS
GENERAL APPEARANCE		
CLEANLINESS		

**BITUMINOUS PAVEMENT**

Shrinkage and Localized Cracking		
Longitudinal and Transverse Cracking		
Ravelling/Abrasion/Pitting		
Rutting		
Shoving		
Edge Failure		
Potholes/Pavement Failure		
Ponding/Poor Drainage		
Requires Sealing		
Utility Cuts		
Ride Quality		

**CONCRETE**

Longitudinal and Transverse Cracking		
Spalling		
Scaling		
Crazing/Map Cracking		
Failed/Disintegrated Areas		

**TREE TRIMMING**

Encroaching the Roadway		
Needs Trimming to Low		

**GUARDRAIL**

Needs Repair Immediately		
Bent Up		
Needs Grass Removed from Around		

**ADDITIONAL COMMENTS:**

**CONDITION RATINGS:**

- 1 - Failure condition (Failed; Needs Total Reconstruction)
- 2 - Very Poor Condition (Needs reconstruction by base restoration)
- 3 - Poor condition (Needs Patching and Repair or Milling)
- 4 - Fair Condition (Significant Aging; Would Benefit from Overlay)
- 5 - Fair Condition (Sound Structural Condition; Surface aging)
- 6 - Good Condition (Sound Structural Condition)
- 7 - Good Condition (Some signs of aging; Sound Structural Condition)
- 8 - Very Good Condition (Little or No Maintenance Required)
- 9 - Excellent Condition (Recent Overlay; Like New)
- 10 - Excellent Condition (New Construction)

# City of Memphis Paving Locations



Year Scheduled: 2015

Location	Funding Source	CD#	Zone	Lane Miles
Shelby Oaks - Summer to Sycamore View (FY 14)	CIP	1	C	3.90
Nam-Ni Estates Subdivision	In-House	1	A	16.57
Kate Bond - Stage to Dead End	In-House	1	C	1.93
Scenic Hills Subdivision	In-House	1	A	14.98
Whitten - Fletcher Creek to Macon	CIP	1	C	6.51
Grays Creek - Highway 64 to Dead End	In-House	1	C	0.62
Charles Bryan - Whitten to Daneman	In-House	1	C	1.29
Old Brownsville Rd - Yale to Bartlett City Limit	In-House	1	C	3.46
Raleigh Terrace Subdivision	In-House	1	A	4.18
Rockcreek/Countrywood II	In-House	1	C	6.49
Rockcreek/Countrywood I	In-House	1	C	9.42
Berryhill I	In-House	1	C	7.69
Mt. Moriah - Ridgeway to Kirby	In-House	2	D	4.09
Hunters Hollow Subdivision	In-House	2	C	7.41
Walnut Ridge Subdivision	In-House	2	C	2.75
Chimneyrock - Dexter to Berryhill	In-House	2	C	4.09
B T Greers Subdivision	In-House	2	C	2.11
Riverdale - Shelby to City Limit	CIP	2	D	3.08
Balmoral Estates/Lynnfield Subdivision	In-House	2	D	15.25
Raines - Clarke to Hickory Hill	CIP	3	D	3.14
Outland - Winchester to Raines	In-House	3	D	4.33
Holmes Rd - Lamar to Sims	In-House	3	D	1.29
Lamar-Holmes Industrial Park	In-House	3	D	2.56
Whitehaven Terrace Subdivision	In-House	3	B	7.27
WInchester - Clarke to Mendenhall	CIP	3	D	6.63
WInchester - Mendenhall to Perkins	CIP	3	D	6.49
Brooks - Elvis Presley to Airways	STP	3	B	12.67
Highland/Prescott Subdivision	In-House	4	B	12.77
Perry - Dunn to Carlton	In-House	4	B	4.69
Prescott - Radford to Cherokee	STP	4	B	7.12
Pendleton - Semmes to Ketchum	CIP	4	B	1.87
Cottonwood - Mendenhall to Perkins	In-House	4	D	3.41
Knightwoods Subdivision	In-House	4	D	6.03
American Way - Perkins to Mt. Moriah	In-House	4	D	8.08
Macon - Bartlett to Dead End	In-House	5	C	0.83
Bartlett - Frontage to Macon	In-House	5	C	0.17
White Station - Poplar to Walnut Grove	In-House	5	C	6.42

Year Scheduled: 2015

Location	Funding Source	CD#	Zone	Lane Miles
Sanderlin - White Station to Mendenhall	In-House	5	C	1.34
Mt. Moriah/Mendenhall - White Station to Poplar	CIP	5	D	8.11
Evergreen - Union to Poplar	In-House	5	A	1.01
Yates - Poplar to Mason	In-House	5	C	8.92
Orleans - Madison to Marshall	In-House	6	A	0.41
Florida - Mallory to Belz	In-House	6	B	3.56
Prospect Park Subdivision	In-House	6	B	5.99
Whitehaven Park Subdivision	In-House	6	B	7.94
Neely - Raines to Holmes	STP	6	B	9.77
Graves - Brooks to Craft	CIP	6	B	2.38
McCorkle - Raines to Shelby	In-House	6	B	2.01
New Horn Lake - Peebles to Mitchell	STP	6	B	5.46
French Fort District	In-House	6	B	1.80
Florida - Mallory to Kansas	STP	6	B	1.14
Bickford - N 2nd to 7th	In-House	7	A	0.59
Exchange - Danny Thomas to N Main	In-House	7	A	0.87
Cleveland - Lamar to Overton Park (FY 14)	CIP	7	A	6.28
Adams - Riverside to Danny Thomas	CIP	7	A	2.15
Washington - N 2nd to Danny Thomas	In-House	7	A	2.02
Lauderdale - Exchange to Washington	In-House	7	A	0.60
Court - 3rd to Danny Thomas	In-House	7	A	0.75
Main - Peabody to GE Patterson	In-House	7	A	3.78
Frayser - Thomas to Watkins (FY 14)	CIP	7	A	7.26
Carson Heights	In-House	7	A	14.72
Evergreen - Jackson to N Parkway	In-House	7	A	1.11
Manassas - Jackson to Poplar	In-House	7	A	1.54
Corrine - Thomas to Morehead	In-House	7	A	1.97
Warford - Chelsea to I-40	In-House	7	A	4.85
Bell - Warford to End	In-House	7	A	0.61
Louisville - Watkins to Dead End	In-House	7	A	0.59
Hawkins Mill - Overton Crossing to Aline	In-House	7	A	1.10
Front - AW Willis to Union	STP	7	A	5.19
East - Crump to MLK Jr Dr	STP	7	A	0.92
Pauline St - Union to Poplar	In-House	7	A	2.88
Washington - Danny Thomas to Dunlap	In-House	7	A	1.31
Sum Lane Miles:				332.52

# Subdivision Street List

---

## Subdivision: B T Greers Subdivision

Hooker St - Palace View to Patmore Rd  
Llano Av/Cv - Hooker St to End  
Patmore Rd - Mullins Station to Harpeth Dr

## Subdivision: Balmoral Estates/Lynnfield Subdivision

Baird - Hanover to Sutherland  
Burt Cv - Lynnfield to Dead End  
Chapman - Hanover to Eastover  
Eastover - Lynnfield to Dead End  
Eastover Cv - Eastover to Dead End  
Eastover Pl - Eastover to Dead End  
Glenclyff - Sandhurst to Baird  
Hanover - Chapman to Briggs  
Hawkhurst - Southhampton to Dead End  
Mackinnon - Macleod to Macinness  
Macleod - Lynnfield to Hawkhurst  
McQueen - Quince to McQueen Cv  
McQueen Cv  
Ridgeland - Vassar to Ridgevalve  
Ridgevale - Lynnfield to Ridgeland  
Sutherland - Vassar to Macleod

## Subdivision: Berryhill I

Aaron Cv - Dartford to Dead End  
Autumndale - Wood Mills to Chimney Rock  
Brent Cv - Chimneyrock to Dead End  
Capas Cv - Dewberry to Dead End  
Carlyn Cv - Chimneyrock to Dead End  
Dartford - Raspberry to Chimney Rock  
Dewberry Ln - Dexter to Chimneyrock  
Gooseberry Cv - Dartford to Dead End  
Hamburg Cv - Dewberry to Dead End  
Heath Cv - Oak Springs to Dead End  
Johnston St - Bohemia to Dead End  
Keighley Cv - Oak Springs to Dead End  
Lindstorm Dr - Milbrey to Dead End  
Lindstrom Dr - Oak Springs to Milbrey  
Lybrook Cv - Lybrook to Dead End  
Milbrey St - Dexter to Dewberry  
Oak Springs Dr - Dexter to Chimneyrock  
Overlea Cv - Dartford to Dead End  
Radnor Cv - Oak Springs to Dead End  
Roby Cv - Oak Springs to Dead End  
Saxony Cv - Elderberry to Dead End  
Suttle Cv - Dartford to Dead End  
Vorlich Cv - Oak Springs to Dead End  
Witily Ln - Dewberry to Oak Springs

## Subdivision: Carson Heights

Bayliss - Wells Station to Graham

---

Division of Public Works: Street Maintenance

Cecil - Graham to Luverne  
Kozar - Weymouth to Luverne  
Luverne - Grey to Wilmette  
Tennyson - Whittier to Dead End  
Weymouth - Grey to Gherald  
Wilmette - Weymouth to Luverne  
Zaio - Wells Station to Gherald

Subdivision: French Fort District

Metal Museum Dr - Alston to Riverside  
Riverside Dr - Jack Carley to Esplanade Pl  
Wisconsin Av - Riverside to Dead End

Subdivision: Highland/Prescott Subdivision

Carrington - highland to Robin Hood  
Catalina - Vanuys to Rhodes; Barron to Philsdale  
Deerwood Circle  
Echles - Robin Hood to Maid Marian  
Elkwood - Elkwood Cv W to Deerwood  
Elkwood Cv E & W  
Fawn Cv  
Fizer - Getwell to Dead End  
Foxcroft - Deerwood to Barron  
Highland - Radford to Vanuys; Barron to Kimball  
Hope - Philsdale to Kimball  
Maid Marian - Echles to Robin Hoond  
Minor - Barron to Dead End  
Minor - Wilshire to Vanuys  
Parkhaven - Park to Dead End  
Patterson - Carrington to Dead End  
Philsdale - Prescott to Rienel  
Rienel - Philsdale to Kimball  
Stuart - Highland to Dead End  
Tyne - Barron to Deerwood  
Vanuys - Hihgland to Robin Hood  
Walthal Circle  
Wilshire - Highland to Echles

Subdivision: Hunters Hollow Subdivision

Antler Cv E&W - Fox Trace to Dead End  
Buck Ridge Cv - Fox Trace to Dead End  
Clover Run - Fox Trace to Dead End  
Colie Stolz Cv - Teal Wing to Dead End  
Eaglet Cv - Fox Trace to Dead End  
Eyrie Crest Cv - Killdeer to Dead End  
Fawn Ridge Cv - Fox Trace to Dead End  
Fox Trace - Hunters Rest to Cordova Rd  
Goshawk Cv - Fox Trace to Dead End  
Hawkcrest Cv N&S  
Hawkcrest Dr - Fox Trace to Dead End  
Hunters Rest - Dexter to Fox Trace  
Ivy MistCv E&W - Fox Trace to Dead End

Juniper Cv E & W - Fox Trace to Dead End  
Killdeer - Lacewing Trace to Teal Wing  
Lacewing Trace - Fox Trace to Dead End  
Lacewing Trace Ct  
Lynx Run Cv - Fox Trace to Dead End  
Magnolia Cv - Lacewing Cv to Dead End  
Nestling Dove - Fox Trace to Dead End  
Nestling Dove Cv  
Partridge Woods Cv - Hunters Rest to Dead End  
Quick Fox Cv - Hunter Rest to Dead End  
Teal Lake Cv - Lacewing Trace to Dead End  
Teal Wing - Fox Trace to Dead End  
Tern Rest Cv - Teal Wing to Dead End  
Widgeon Lake Cv - Lacewing Trace to Dead End  
Wren Hollow Cv - Nestling Dove to Dead End

Subdivision: Knightwoods Subdivision

Ashview Cv - Forest View to End  
Ashwood St - Knight Arnold to Forest View  
Camelot Av/Cv - Ashwood to Goodlett  
Claudette Rd - Knight Arnold to Parkchester  
Creighton Av/Cv - Forest View to Goodlett  
Dorechester St - Middlesex to Forest View  
Forest Brook Dr - Ashwood to Forest View  
Forest Glen St/Cv - Camelot to Forest View  
Forest View Dr - Goodlett to Ashwood  
Lynmouth St - Middlesex to Forest View  
Middlesex Av - Goodlett to Lynmouth  
Northbridge Av - Ashwood to Southbridge  
Parkchester Av - Wallingford to Ashwood  
Southbridge St - Forestview to Northbridge  
Wallingford St - Parkchester to Camelot

Subdivision: Lamar-Holmes Industrial Park

Command Dr - Federal to Dead End  
Federal Ave - Republic to Dead End  
Republic Dr - Lamar to Dead End  
United Dr - Republic to Universal  
Universal Dr - Lamar to Dead End

Subdivision: Nam-Ni Estates Subdivision

Bacon - Ridgemont to Tessland  
Dante - Dead End to Sandburg; Trudy to Kerwin; Hitchcock to Dead End  
Emerson - Trudy to Kerwin  
Emerson Cv  
Escrow - Kipling to Dead End  
Haliburton - Tessland to Dante  
Hitchcock - Hobson to St Elmo  
Hobson Cv  
Hobson Rd - Dead End to Hawkins Mill  
Karen - Tessland to Dead End  
Kerwin - Emerson to St Elmo



Kipling - Bacon to Stormy  
Mill - Hobson to Dead End  
Nam-Ni - Bacon to Voltaire  
Sandburg - Wordsworth to Dante  
Stormy - Kipling to Emerson; Tessland to Windy  
Stowe St - Wordsworth to Hobson  
Tessland - Dead End to Raleigh-Millington  
Time St - Kipling to Windy  
Trudy - Windy to Ridgemont; Windy to St Elmo  
Trufant - Trudy to Kerwin; Hobson to Zane  
Voltaire - Dead End to Windermere; Trudy to Dead End  
Windermere - Ridgemont to St Elmo  
Windy - Trudy to Stormy  
Wordsworth - Sandburg to Stowe; Trudy to Kerwin  
Zane - Trufant to Dante

Subdivision: Prospect Park Subdivision

Alcy - I240 to Dead End  
Ball - Norris to Alcy  
Benton - Ball to Dead End  
Colgate - Vanderbilt to Ball  
Rutgers - Ball to Vanderbilt  
Vanderbilt - Alcy to Ball  
Vassar - Rutgers to Dead End

Subdivision: Raleigh Terrace Subdivision

Beechcliff - Hanna to Leschallas  
Crain Rd - Raleigh Millington to Fairbanks  
Durford Wood Cv - Renners to Dead End  
Fairbanks St - Hanna to Pin Oak  
Hanna Dr - Yale to Powers  
Hocker Hedge Cv - Beechcliff to Dead End  
Kettlebrook Cv - Beechcliff to Dead End  
Leschallas Dr - Renners Rd to Dead End  
Renners Cv - Renners to Dead End  
Renners Rd - Hanna to Leschallas  
Richie Rd - Coleman to Dead End

Subdivision: Rockcreek/Countrywood I

Becket - Kings Cross to Dead End  
Briar - Chimneyrock to King William  
Canterbury Court - King William to Dead End  
Chesterfield - Countrywood to Dead End  
Churchill Gate - Kings Trail to Dead End  
Concord Green - Kings Trail to Dead End  
Countrywood - Rockcreek to End  
Countrywood Fairway - Countrywood to Dead End  
English Mill - Briar to Dead End  
Essex Court - King William to Dead End  
Essexbriar - Briar to Dead End  
Fox Heather - King William to Dead End  
Gunner Hills - King William to Dead End

King William - Chimneyrock to Briar  
Kings Cross - Buckhurst to King William  
Kings Trail - King William to Dead End  
Kingsrow - Rockcreek to Chimneyrock  
Middle Essex - Briar to Dead End  
Royal Commons - Kings Trail to Dead End  
Shetland - Kings Cross to Dead End  
St Ives - Kingsrow to Dead End  
Surrey Hill - Countrywood to Dead End  
West Cannon - King William to Dead End  
Whites Mills - King William to Dead End  
Woolrich - Kingsrow to Kings Cross

Subdivision: Rockcreek/Countrywood II

Bellehurst - Rockcreek to Country Glade  
Carrol Ridge - Carrolwood to Meadow Ridge  
Carrollwood - Carol Ridge to Grandbury  
Country Downs - Bellehurst to Hearth Stone  
Country Glade - Strawberry to Bellehurst  
Country Leaf - Hearth Stone to Dead End  
Country Maple - Hearth Stone to Dead End  
Country Pecan - Hearth Stone to Dead End  
Crossvine - Bellehurst to Dead End  
Fletcher Creek Pkwy - Rockcreek to Carrollwood  
Hearth Stone - Bellehurst to Berryhill  
Meadow Pines - Meadow Ridge to Dead End  
Meadow Ridge - Lake Edge to Meadow Pines  
Minda - Carrollwood to Meadow Ridge  
Minda Path - Minda to Dead End  
Strawberry - Hearthstone to Berryhill  
Summer Sweet - Bellehurst to Dead End  
Twisted Oak Cove North  
Twisted Oak Cove South

Subdivision: Scenic Hills Subdivision

Ancroft Cv - Ardvale to Dead End  
Ardvale Rd - Scotland to Dead End  
Balmoral - Bannockburn to Glengarry  
Bannockburn - Ivengarry to New Allen  
Bannockburn Cv - Bannockburn to Dead End  
Braemar Dr - Dumbeath Rd to Sandwick  
Canisbay Rd - Whitney Ave to Dead End  
Carnoustie - Invergarry to Dead End  
Castlebay Av - Dumbarton to Dead End  
Clydebank Rd - Taransay Rd to Dead End  
Dumbarton - Whitney to Dead End  
Dumbarton - Scotland to Whitney  
Dumbeath Rd - Braemar Dr to Dead End  
Duncansky - Laurencekirk to Bannockburn  
Dundee - Glengarry to Scenci Hwy  
Falkirk - Scenic to Bannockburn

Glenfinnan - Whitney to Carnoustie  
Glengarry - Whitney to Invegarry  
Helmsdale Rd - Dumbarton to Clydebank  
Invegarry - Glengarry to Dead End  
Kirkcaldy - Whitney to Scotland  
Kirkwall Rd - Scotland to Dead End  
Lammermuir - Scotland to Glengarry  
Laurencekirk - Invegarry to Dead End  
Pembroke - Glengarry to Scenic Hwy  
Sandray Dr - Dumbeath to Canisbay  
Sandwick Dr - Braemar Dr to Dead End  
Scotland Rd - James to Whitney  
Scotland Rd - Whitney to Dead End  
Taransay Rd - Clydebank to Dead End

Subdivision: Walnut Ridge Subdivision

Beechwood - Walnut Ridge to Dead End  
Beechwood Cv - Walnut Ridge to End  
Briarwood - Walnut Ridge to Dead End  
Briarwood Cv - Walnut Ridge to End  
Cherrywood - Walnut Ridge to Dead End  
Cherrywood Cv - Walnut Ridge to End  
Crestmont - Walnut Rdige to Dead End  
Crestmont Cv - Walnut Ridge to End  
Glendale - Timberlane to Dead End  
Glendale Ct - Timberlane to End  
Hickory Trail - Forest Hill Irene to Walnut Ridge  
Hickory Trail Dr - Walnut Ridge to Forest Hill Irene  
Rosewood - Hickory Trail to Dead End  
Rosewood Cv - hickory Trail to End  
Saddlewood - Hickory Trail to Dead End  
Saddlewood Cv - Hickory Trail to End  
Timberlane - Walnut Ridge to Dead End  
Timberlane Dr - Walnut Ridge to End  
Walnut Ridge - Walnut Grove to Hickory Trail  
Walnut Ridge Ln - Walnut Grove to Hickory Trail Dr  
Walnut Ridge Lp - Hickory Trail to Walnut Ridge Ln

Subdivision: Whitehaven Park Subdivision

Auburn - Craft to Raines  
Birchleaf - Craft to Whitaker  
Cheryl - Raines to Dead End  
Lydgate - Cheryl to Whitehaven Park  
Lydgate - Orleans to Auburn  
Micheal - Raines to Dead End  
Micheal Cv  
Whitaker - Michael to Elvis Presley  
Whitehaven Park Circle  
Wildleaf - Craft to Whitaker  
Wildleaf Cv

Subdivision: Whitehaven Terrace Subdivision

Boeingshire Dr/Cv - Hornsby to Cedar Valley  
Cedar Valley Dr - Mona to Boeingshire  
Childs Dr/Cv - Wilson to Dianne Dr  
Depanne Rd - Wilson Rd to Dianne Dr  
Dianne Dr - Childs Dr to End  
Hornsby Dr/Cv - Wilson to Holmes  
Hudgins Rd - Pennel Rd to Holmes  
McKellar Hills Av - Hornsby to Dead End  
McPherson - Schutt to Hudgins  
McPherson Rd/Cv - Hornsby to Pennel Rd  
Mona Dr - Hornsby to Childs  
Pennel Rd/Cv - Schutt to Hudgins; McPherson to Hornsby  
Schutt Rd - McPhearson Rd to End

Year Scheduled: 2016

Location	Funding Source	CD#	Zone	Lane Miles
Hawkins Mill - New Allen to Raleigh-Frayser	In-House	1	A	2.98
Whitten - City Limit to Reese	In-House	1	C	0.84
Whitten - Reese to Fletcher Creek	In-House	1	C	7.45
Niece Plaza	In-House	1	C	11.74
Deerfield Subdivision	In-House	1	C	8.02
Reed Hooker - Highway 64 to City Limit	In-House	1	C	1.40
University St - Clifton to Frayser	In-House	1	A	2.94
Bayliss - Graham to Wells Station	In-House	1	C	1.56
Nu-Van Subdivision	In-House	1	A	4.28
Berryhill Rd - Forest Hill Irene to City Limit	In-House	1	C	1.89
Riverdale - Winchester to Raines	STP	2	D	5.90
Riverdale - Raines to Shelby	STP	2	D	6.03
Knight Arnold - Hickory Hill to Ridgeway	STP	2	D	3.55
Massey - Cottingham to Kirby	In-House	2	C	2.34
Mt. Moriah - Mendenhall to White Station	In-House	2	D	5.79
Berryhill III	In-House	2	C	5.58
Mendenhall - Mt. Moriah to Knight Arnold	STP	3	D	7.89
Hickory Hill - Mt Moriah to Winchester	STP	3	D	9.50
Airways - Shelby to City Limit	STP	3	B	12.51
Tuggle - Shelby to Lamar	In-House	3	D	3.49
Getwell - Park to I240	STP	4	D	8.84
McLemore - Bellevue to Southern	In-House	4	A	2.55
Castalia Heights	In-House	4	B	2.98
Willowdale Subdivision	In-House	4	D	2.74
Cooper - Central to Washington	STP	5	A	4.34
Highland - Walnut Grove to Summer	STP	5	A	4.84
Perkins - Summer to Walnut Grove	STP	5	C	4.86
Macon - Graham to Wells Station	In-House	5	C	2.06
Poplar Blvd Blk	In-House	5	A	3.05
Historic Stonewall District	In-House	5	A	7.49
Pershing Ave - McConnell St to Scott St	In-House	5	A	1.32
Tutwiler - Graham to Highland	In-House	5	A	1.87
Berclair Manor	In-House	5	C	4.49
Monroe - Danny Thomas to Madison	In-House	6	A	2.85
Barton & Lamb Subdivision	In-House	6	B	13.65
S Parkway Place Subdivision	In-House	6	B	2.98
Sewanee - Fields to Shelby	In-House	6	B	4.46
Holmes - East Shore to Dead End	In-House	6	B	3.57

Year Scheduled: 2016

Location	Funding Source	CD#	Zone	Lane Miles
Talbot - Front to Main	In-House	7	A	0.18
St. Paul - Main to S. Second	In-House	7	A	0.56
Webster - Main to S. Second	In-House	7	A	0.28
Larkin - Cleveland to Claybrook	In-House	7	A	0.21
Georgia - Main to S. Second	In-House	7	A	0.28
Riverside - Jefferson to Beale	STP	7	A	2.03
Watkins - Cleveland to Chelsea	In-House	7	A	6.08
University Park Block	In-House	7	A	13.40
Hollywood - Staten to Jackson	In-House	7	A	2.65
Main - GE Patterson to E Carolina	In-House	7	A	1.28
Benjestown Rd - Marsh to Carrolton	In-House	7	A	1.89
West Evergreen Subdivision	In-House	7	A	3.13
Historic Smokey District	In-House	7	A	15.49
			Sum Lane Miles:	232.08

# Subdivision Street List

---

## Subdivision: Barton & Lamb Subdivision

Cherokee - Victor to Marjorie  
Chestnut - Victor to Cherokee  
Clancy - Kerr to Dead End; Kirkland to Person  
Doris - Nefler to Mississippi  
Gaither - Kerr to Person; Person to Marjorie  
Havana - Kerr to Marjorie  
Kant - Tampa to Dead End  
Kirkland - Gaither to Mississippi  
Leland - Kerr to Marjorie  
Mississippi - Kerr to Alice  
Nefler - Gaither to Mississippi  
Norfolk - Mississippi to Marjorie  
Orange - Victor to Marjorie  
Ottawa - Clancy to Gaither  
Palermo - Norfolk to Mississippi  
Rosewood - Marjorie to Mississippi  
Shawnee - Mississippi to Palermo  
Tampa - Marjorie to Gaither  
Victor - S Parkway E to Person  
Waldrof - Marjorie to Havana  
Wichita - Gaither to Mississippi

## Subdivision: Berclair Manor

Angelina Pl - Owen to Dead End  
Castle Av - Waring to Dead End  
Durbin Av - Novarese to Dead End  
Faxon Av - Graham to Vaughn  
Greemount Av - Waring to Castle  
Novarese Rd - Summer to Given  
Owen Rd - Waring to Stratford  
Powell Av - Waring to Berclair

## Subdivision: Berryhill III

Autumndale Dr - Wood Mills to Chimneyrock Blvd  
Bredbury Cv - Autumndale to Dead End  
Brent Ln - Chimneyrock to Elderberry  
Bridleglen - Raspberry to Dead End  
Bridleglen - Raspberry to Wood Mills  
Callaway Ct - Wood Mill to Dead End  
Chestnut - Autumndale to Raspberry  
Dartford Dr - Chimneyrock to Raspberry  
Dundee Cv - Autumndale to Dead End  
Fareham Cv - Raspberry to Dead End  
Lichfield Ct - Brent to Dead End  
Meadow Green - Mill Farm to Dexter  
Meadow Green Cv - Mill Farm to Dead End  
Meadow Mill - Meadow Green to Dead End  
Meadow River - Meadow Green to Dead End  
Mill Farm Cv - Mill Farm to Dead End

Mill Glen - Meadow Green to Dead End  
Raspberry - Autumndale to Chestnut  
Reading Cv - Lichfield to Dead End  
River Mill - Meadow Green to Dead End  
Swansea Cv - Raspberry to Dead End  
Toth - Bridleglen to Dead End  
Tracewood - Callaway to Dead End  
Wenham Cv - Dartford to Dead End (SE & NW)

Subdivision: Castalia Heights

Custer St - Frisco to Dunn  
Filmore Av - Custer to Frisco  
Freemont Rd - Custer to Airways  
Frisco Av - Castalia to Dunn Rd

Subdivision: Deerfield Subdivision

Arbor Lane Cv - Meadowland to Dead End  
Arbor Lane Dr - Green Hollow to Meadowland  
Baxter Cv - Mesa to Dead End  
Country Lawn - Valley Mist to Dead End  
Crystal Brook - Sage Meadow to Dead End  
Deer Trail - Sage Meadow to Dead End  
Deerfield Trace - Sage Meadow to Kate Bond  
Desert Rose - Sage Meadow to Dead End  
Green Hollow - Meadowland to Dead End  
Ivy Hollow - Laurelcrest to Sage Meadowland  
Laurelcrest - Reese to Dead End  
Meadowland - Valley Mist to Arbor Lane  
Mesa - Sage Meadow to Kate Bond  
Mossy Rock - Mesa to Dead End  
Redfearn Circle  
Sage Meadow - Reese to Dead End  
Shadyside Cv - Reese to Dead End  
Sunbury Circle  
Sunny Hollow Cv - Reese to Dead End  
Turnage Valley - Mesa to Reese  
Valley Mist - Appling to Dead End  
Wheatfield - Green Hollow to Meadowland

Subdivision: Historic Smokey District

Ayers St - Chelsea to Jackson  
Bethel Av - Thomas to Manassas  
Dunlap St - Keel to Jackson  
Keel - Thomas to Woodlawn  
Looney Av - Manassas to Thomas  
Saffarans - Manassas to McDavitt

Subdivision: Historic Stonewall District

Angelus St - Massey to Poplar  
Auburndale St - Poplar to Union  
Clark Pl - Court to Poplar  
Court Av - Claybrook to Avalon  
Idlewild St - Union to Dead End



Jefferson Av - Cleveland to Watkins; Avalon to Dead End  
Lockett Pl - S Belvedere to Dead End  
Monroe Av - S Belvedere to Evergreen  
Stonewall St - Poplar to Court  
Washington Av - Watkins to Claybrook  
Watkins - Poplar to Union  
Willet St - Poplar to Court; Union to Dead End

Subdivision: Knight Knoll Subdivision

Almo Av - Goodlett to Allshore  
Aloha Av - Phyllis to Meadows  
Capri St - Cottonwood to End  
Cherry Rd - Cottonwood to Knight Arnold  
Danville Rd - Almo to Knight Arnold  
Dearing Rd - Almo to Aloha  
Knightway St - Almo to Knight Arnold  
Meadows Ln - Almo to Aloha  
Phyllis Ln - Almo to Aloha  
Randy Ln - Almo to Knight Arnold

Subdivision: Niece Plaza

Amstel Cv - Dromedary to Dead End  
Debra Cv East - Van Der Veer to Dead End  
Debra Cv West - Van Der Veer to Dead End  
Deventer Cv - Dromedary to Dead End  
Dokkum Cv - Van Der Veer to Dead End  
Dokkum Dr - Van Der Veer to Van Leer  
Dromedary Dr - Stage to Reese  
Harlingen Dr - Dokkum to Dromedary  
Juanita Cr - Van der Veer to Van der Veer  
Juanita Cv - Van der Veer to Dead End  
Laura Cr - Van der Veer to Van der Veer  
Mariner Cv - Reese Point to Dead End  
Markim Dr - Van Der Veer to Van Leer  
Maryland Ct - Van Leer to Dead End  
Petten Cv - Van Der Veer to Dead End  
Petten Dr - Van Der Veer to Harlinger  
Polder Dr - Van Leer to Dromedary  
Ransdorp Dr - Van Leer to Dromedary  
Reese Lake Cr - Van Der Veer to Van Der Veer  
Reese Lake Cv - Reese Lake to Dead End  
Reese Point Cv - Reese Point to Dead End  
Reese Point Dr - Van Der Veer to Mariner  
Tagen Ct - Van der Veer to Dead End  
Tagen Cv - Tagen to Dead End  
Tagen Dr - Van der Veer to Dromedary  
Texel Cv - Van der Veer to Dead End  
Van Der Veer Dr - Dromedary to Stage  
Van Leer Dr - Stage to Dromedary  
Volendam Cv - Dromedary to Dead End

Subdivision: Nu-Van Subdivision

Ardmore St - Frayser to Nunnelee  
Boone St - Tim Tam to Slocum  
Branch St - Willow Wood to Dead End  
Daywood Av - Boone to Mountain Terrace  
McKell Dr - Nunnelee to Tim Tam  
Nunnelee Av - University to Mountain Terrace  
Slocum Av - Mountain Terrace to University  
Tim Tam Av - McKell to Ardmore  
Willow Wood Av - University Av to Dead End

Subdivision: Poplar Blvd Blk

Ashlawn - Monroe to Alicia  
Bingham - Poplar to Quail  
Madison - Bingham to Dead End  
Merton - Poplar to Quail  
Monroe - Patricia to Ashlawn  
Patricia - Madison to Union  
Quail - Merton to Bingham

Subdivision: S Parkway Place Subdivision

Barton - South Parkway to Person  
Dove - Yazoo to S Main  
Dover - Yazoo to S Main  
Essex - Third to Yazoo  
Main - Essex to Person  
Michigan - Essex to Person  
Person - Third to Yazoo  
Yazoo - Essex to Person

Subdivision: University Park Block

Auburndale - Migon to Tutwiler  
Avalon - Jackson to Tutwiler  
Belvedere - Jackson to Tutwiler  
Claybrook - North Parkway to Snowden  
Crump - Evergreen to McLean; McLean to Dead End  
Dickinson - Jackson to Tutwiler  
Faxon - Bellevue to Stonewall  
Greenlaw - Bellevue to Dead End  
Hawthorne - Jackson to Tutwiler  
Idlewild - Tutwiler to Dead End  
Lyndale - Jackson to Stonewall; Hawthorne to McLean  
Maury - Jackson to Tutwiler  
Migon - Evergreen to McLean  
Montgomery - Forest to Dead End  
Snowden - Bellevue to Stonewall  
Tutwiler - Stonewall to McLean  
Willett - Jackson to Tutwiler

Subdivision: West Evergreen Subdivision

Claybrook St - Poplar to Overton Park  
Exchange - Claybrook to Cleveland  
Larkin - Montgomery to Cleveland  
Malvern - Larkin to Peach

Montgomery - Poplar to Peach

Peach - Bellevue to Cleveland

Subdivision: Willowdale Subdivision

Danville Rd - Dearing to Jamaica

Dearing Rd - Willow to Jamaica

Sea Isle Rd - Quince to Willow

Year Scheduled: 2017

Location	Funding Source	CD#	Zone	Lane Miles
Rolling Hills Subdivision	In-House	1	A	19.08
Morning Woods Subdivision	In-House	1	C	6.59
Grove Rd - Berryhill to Morning Sun	In-House	1	C	1.82
Park - Mt Moriah to Ridgeway	In-House	2	D	10.79
Southwind Office Center	In-House	2	D	9.25
Southwind Office Center	In-House	2	D	9.24
Autumn Creek Dr - Cordova Club Dr to Cordova Rd	In-House	2	C	1.64
Meadow Trail Dr - Macon to Autumn Creek Dr	In-House	2	C	0.96
Berryhill II	In-House	2	C	5.72
Kensington Gardens	In-House	3	B	6.83
Mendenhall - Raines to Shelby	In-House	3	D	5.31
Scottsway Rd - Mount Moriah to Dead End	In-House	3	D	0.50
Winchester Rd - Hacks Cross to Tournament Dr	In-House	3	D	8.46
Knight Arnold - Cherry to Lamar	In-House	4	B	6.78
Stratford - Macon to Summer	In-House	5	C	2.82
Southern - Semmes to Highland	In-House	5	B	3.49
Laurelwood - Grove Park to Perkins Extd	In-House	5	C	0.39
Meadowcrest - White Station to Dead End	In-House	5	C	0.82
Tillman - Sam Cooper to Broad	In-House	5	A	0.27
Raines - Ridge to Sewanee	In-House	6	B	1.61
Barton Heights	In-House	6	B	11.79
Mallory - Lauderdale to Third	In-House	6	B	2.78
Horn Lake Rd - Wyatt to Holmes	In-House	6	B	9.74
Dr. J E Walker Homes Subdivision	In-House	6	B	7.25
Leon - Ayers to Decatur	In-House	7	A	0.32
Springdale - Jackson to Chelsea	In-House	7	A	3.22
Marble - Chelsea to Merchant	In-House	7	A	0.48
Lakewood Hills Subdivision	In-House	7	A	11.97
Wagner - Beale to Vance	In-House	7	A	0.44
Sum Lane Miles:				150.36

# Subdivision Street List

---

## Subdivision: Barton Heights

Belle Haven - Third to Redbud  
Berea - Mitchell to Dead End  
Bevel - Peebles to Dead End  
Biscayne - Third to Redbud  
Brooks - Third to New Horn Lake  
Charlotte - Mitchell to Redbud  
Dunbar - Berea to Meadowbrook; Redbud to Charlotte  
Eastman - Meadowbrook to Third  
Emory - Berea to Redbud  
Lotus - Brooks to Dead End  
Meadowbrook - Mitchell to Dead End  
Redbud - Mitchell to Peebles  
Rollins - Third to Redbud

## Subdivision: Berryhill II

Autumn Tree Cv - Autumn Tree to Dead End  
Bridlewood - Wood Mills to 8966 Bridlewood (County Line)  
Cedar Chase Cv - Wood Mills to Dead End  
Cedar Farms Cv - Cedar Farms to Dead End  
Cedar Farms Dr - Wood Farms to Riverwood Farms  
Haystack - Stable Park to Dead End  
Magnolia Bloom - Wood Mills to Dead End  
Magnolia Farms - Stable Mill to Dead End  
Magnolia Glen - Magnolia Bloom to Dead End  
Saddle Chase - Stable Mill to Dead End  
Saddle Glen - Stable Mill to Dead End  
Saddle Hill - Stable Mill to Dead End  
Stable Mill - Wood Mills to Wood Mills  
Stable Park Dr - Stable Mill to Dead End  
Wayside - Bridlewood to Dead End  
Wininger - Bridlewood to Dead End  
Wood Farms - Wood Mills to Cedar Trails  
Wood Farms Cv - Wood Farms to Dead End  
Wood Mills Cv - Wood Mills Dr to Dead End (E & W)

## Subdivision: Dr. J E Walker Homes Subdivision

Argo Av - Yorkley to Dead End  
Ashford Rd - Carbon to Daggett  
Brantley Rd - Daggett Rd to Millard Rd; W Horn Lake to Horn Lake  
Carbon Cv - Elder to Dead End  
Carbon Rd - Daggett to Elder  
Daggett Rd - W Mitchell to Glencoe  
Elder Rd/Cv - Horn Lake to Carbon  
Fairhope Rd - Yorkley to Dead End  
Glencoe Rd - Vernelle to Yorkley  
Horn Lake Rd - Mitchell to Vernelle  
Lanette - Ashford to Glencoe  
Macy Rd - Vernelle to End  
Millard Rd - Vernelle to Elder

Rochester Rd - Mitchell to Glencoe

Vernelle Av - Glencoe to Horn Lake

Yorkley Rd/Cv - Carbon to Glencoe

Subdivision: Kensington Gardens

Bedford Ln - Claredon to Ladbrook

Brompton Rd - Cromwell Av to Christine Rd

Clarendon Rd - Earls Court Rd to Dead End

Cromwell Cv - Cromwell Rd to Dead End

Earls Court Cv - Earls Court Rd to Dead End

Earls Court Rd - Cromwell Av to Tchulahoma Rd

Elm Park Rd - Cromwell to Ladbrook

Kenland Dr - Bishop Bridge to Tchulahoma

Kentwood Ln - Earls Court Rd to Dead End

Ladbrook Rd - Earls Court Rd to Elm Park Rd

Tchulahoma Rd - Winchester Rd to New Tchulahoma Rd

Wickcliff Ln - Clarendon Rd to Christine

Subdivision: Lakewood Hills Subdivision

Albatross Cv - Northwind to Dead End

Beechdale Cv - Dead End to Beechrn

Beechridge Cv - Dead End to Beechrn

Beechrn Cv - S Lakewood to Dead End

Beechrn Dr - Homewood to Lakewood

Kildee Cv - Dead End to W Lakewood

Kingfisher Dr - Homewood to Dead End

Lakewood Dr/Cv - Homewood to Beechrn Cv

Lansing Rd - Windermere to Woodhills

Lockwood St - Plymouth to Martindale

Mallard Point Dr - Dead End to Homewood

Martindale Av - Lockwood to Raleigh Millington

Northwind Dr - Woodwind Dr to Albatross

Penguin Cv - Northwind to Dead End

Plymouth Av - Lockwood to Raleigh Millington

Spring Trail Dr - Dead End to Woodhills

Sweet Tree Dr - Woodhills to Dead End

Timber Ridge Cv - Homewood to Dead End

Westwood Cv - W Lakewood to Dead End

Windermere Rd - James to Lansing

Winderwood Cr - Woodhills to Woodhills

Winthrope Cv - Wychemere to Dead End

Woodhaven Rd - Dead End to N Lakewood

Woodhills Dr - Lakewood to James

Woodwind Dr - Lakewood Dr to End

Wychemere Dr - Dead End to Woodhills

Subdivision: Morning Woods Subdivision

Aspen Glade Cv - Morning Woods to Dead End

Cedar Brook Cv - Morning Woods to Dead End

Cedar Fall Cv - Morning Woods to Dead End

Cedar Glade Cv - Davies Plantation to Dead End

Cedar Glen Cv - Davies Plantation to Dead End

Cedar Grove Cv - Morning Woods to Dead End  
Cedar Mist Cv E & W - Cedar Mist to Dead End  
Davies Plantation Rd - Grove Rd to US 64  
Eagle Brier Cv - Morning Woods to Dead End  
Misty Brook Cv - Misty Brook Ln to Dead End  
Misty Brook Ln - Shadow Glen Cv to Grove Rd  
Misty Grove Cv - Davies Plantation to Dead End  
Misty Point Cv - Morning Woods to Dead End  
Misty Ridge Cv - Morning Woods to Dead End  
Misty Wood Cv - Morning Woods to Dead End  
Morniing Grove Ct - Morning Grove Dr to Dead End  
Morning Grove Dr - Morning Woods to Grove Rd  
Morning Woods Dr - Davies Plantation to Davies Plantation  
Morning Woods Dr South - Davies Plantation to Misty Brook Ln  
Shadow Glen Cv - Misty Brook to Dead End  
Shadow Point Cv E & W - Misty Brook Ln to Dead End  
Shadow Ridge Cv - Wood Grove to Dead End  
Silver Hollow Cv - Morning Woods to Dead End  
Still Forest Cv - Morning Woods to Dead End  
Wood Grove Cv - Shadow Ridge to Dead End  
Wood Run Cv - Morning Woods to Dead End

Subdivision: Rockcreek/Countrywood Phase II

Admington - Chippingham to Dead End  
Angel Crest - Oak Springs vs Oak Springs  
Arborgate - Lake Springs to Dead End  
Armscote - Tidmington to Dead End  
Beckenham - Littlemore Fairway to Brackenbury  
Berry Bush - Berryhill to Fulton  
Berry Garden Cir E  
Berry Garden Cir S  
Berry Garden Cir W  
Berwick - Edney Ridge to Dead End  
Brackenbury - Grandbury to Dead End  
Brier Harbor -Valley Edge to Dead End  
Brownsford - Brackenbury to Chimneyrock; Brackenbury to Dead End  
Brynhurst - Kettering to Dead End  
Buckhurst - Littlemore Fairway to Chimneyrock  
Burlingate - Edney Ridge to Grandbury  
Cherry Spring - Carrolwood to Grandbury  
Chimney Rock - Germantown Pkwy to Dexter  
Chingford - Chimneyrock to Dead End  
Chippingham - Littlemore Fairway to Montego  
Clair Harbor - Valley Edge to Dead End  
Coral Leaf - Fulton Ln to Dead End  
Coral Shell - Berryhill to Purple Leaf  
Coral Tree - Purple Leaf to Snow Drift  
Crown - Dulwich to Dead End  
Dulwich - Buckhurst to Littlemore Fairway  
Easton - Chippingham to Edney Ridge

Edney Ridge - Webbing to Grandbury  
Exeter - Rembrook to Dead End  
Finsbury - Dulwich to Dead End  
Fletcher Creek - Rockcreek to Carrollwood  
Fletcher Fork - Oak Springs to Dead End  
Fountainview - Carrollwood to Dead End  
Fulton - Berry Garden Circle W to Dead End  
Glendower - Brackenbury to Dead End  
Gracie - Berry Bush to Dead End  
Grandbury - Oak Springs to Littlemore Fairway  
Grendel - kettering to Dead End  
Hickory Path - Grandbury to Grandbury  
Hidden Springs - Oak Springs to Dead End  
Kettering - Webbing to Burlingate  
Lake Edge - Carrollwood to Grandbury  
Lake Hill - Pepperhollow to Sourwood  
Lake Springs - Oak Springs to Valley Edge  
Lakefield - Fletcher Fork to Dead End  
Lakeside -Rocky Stream to Dead End  
Medina - Carrollwood to Dead End  
Montego - Rembrook to Rockcreek  
Mount Badon - Beckenham to Brownsford  
Nutbush - Chippingham to Dead End  
Oak Hollow - Carrollwood to Grandbury  
Oak Springs - Berryhill to Dexter  
Otterburn - Brackenbury to Dead End  
Pepper Hollow - Valley Edge to Dead End  
Purple Leaf - Fulton to Dead End  
Reflections - Lake Edge to Dead End  
Rembrook - Exter to Chippingham  
Rocky Stream - Valley Edge to Fulton  
Rocky Top - Grandbury to Dead End  
Rotherwood - Kettering to Dead End  
Snow Drift - Purple Leaf to Coral Tree  
Sourwood - Valley Edge to lake hill  
Spring Garden - Carrollwood to Dead End  
Stone Stream - Valley Edge to Fulton  
Thorncliff Fairway - Rockcreek to Countrywood  
Tidmington - Rockcreek to Rembrook  
Tramway - Rembrook to Dead End  
Valley Edge - Oak Springs to Dead End  
Webbing - Edney Ridge to Kettering  
Weeping Cherry - Purple Leaf to Berry Bush

Subdivision: Rolling Hills Subdivision

Ashville Dr - Madewell to Shiloh  
Bankston Cv - Madewell to Dead End  
Baskin St - Madewell to Canefield; Darn to Dellwood  
Baxter Av - Steele to Students  
Canfield Av - Madewell to Dellwood



Childers Av - Frayser School to Riney  
Childers Cv - Riney to Dead End  
Cindy Ln - Thomas to Millington  
Claire Av - W Sutton to N Watkins  
Dahlia Dr - Baskin to Darm  
Darm Av - Dahlia to Dead End  
Frayser School Dr - Winston to Dellwood  
Gillie St - Martha to Corning  
Gowan Dr - Corning to N Watkins  
Greendale Av - Ridgecrest to Steele  
Gregory Av - Frayser School to Riney  
Haywood Av - Frayser School to Ridgecrest  
Martha Dr - W Sutton to Gillie  
Obion Dr - Haywood to Madewell  
Paullus Av - Ridgecrest to Riney  
Paullus Cv - Paullus to Dead End  
Ridgecrest St - Dellwood to Madewell  
Riney St - Dellwood to Haywood  
Rolling Hills Dr - Frayser to Riney  
Shiloh Dr - Madewood to Haywood  
Students St - Steele to Dead End  
Sutton Dr - Corning to N Watkins  
Todds Creek Cv - Steele to Dead End  
Winston Dr - N Watkins to Corning

Subdivision: Southwind Office Center

Players Club Pkwy - Hacks Cross to Winchester  
T & B Blvd - Hacks Cross to Players Club Pkwy  
Tournament Dr - Hacks Cross to End

Year Scheduled: 2018

Location	Funding Source	CD#	Zone	Lane Miles
Overton Crossing - Frayser to St. Elmo	In-House	1	A	5.81
Richmond Square Subdivision	In-House	1	C	19.64
Quince - Winchester to Riverdale	In-House	2	D	2.92
Kirby Meadows	In-House	2	D	8.69
Greentrees Subdivision	In-House	2	D	9.40
Sweetbriar Block	In-House	2	C	5.28
Chevron Subdivision	In-House	3	B	5.84
Heritage Estates Subdivision	In-House	3	D	13.19
Mallard Ridge Subdivision	In-House	3	D	4.99
Raines Rd - Lamar to Getwell	In-House	3	B	2.29
Elliston Heights Subdivision	In-House	4	B	4.25
White Station - Summer to Bartlett	In-House	5	C	8.19
Highland St - Summer to Macon	In-House	5	A	3.38
Crescent Subdivision	In-House	6	B	2.62
Mississippi - Crump to Danny Thomas	In-House	6	A	2.61
Latham St - E Mallory to E Bodley	In-House	6	B	0.32
Bodley Av - Latham to Lauderdale	In-House	6	B	1.79
Brooks Rd - Horn Lake to Third	In-House	6	B	1.67
Warford - Chelsea to Jackson	In-House	7	A	4.87
Ridgegrove Subdivision	In-House	7	A	7.49
Dunlap - Chelsea to Dead End	In-House	7	A	0.96
		Sum Lane Miles:		116.20

# Subdivision Street List

---

## Subdivision: Chevron Subdivision

Chevron - Sealy to Dead End  
Cloudland - Chevron to Melodywood  
Daisywood - Tradewood to Cloudland  
Dawnridge - Morningridge to Chevron  
Feldspar - Cloudland to Dead End  
Greybark - Chevron to Chevron  
Langwood - Dawnridge to Dead End  
Melodywood - Tchulahoma to Chevron  
Moonglow - Cloudland to Dawnridge  
Morningview - Tchulahoma to Cloudland  
Serenade - Greybark to Greybark  
Shelter - Melodywood to Dead End  
Spring Shadow - Melodywood to Melodywood  
Tradewind - Cloudland to Morningview

## Subdivision: Crescent Subdivision

Brownlee Rd - Auburn to McCorkle  
Crescent Rd - McCorkle to Sidney  
Parkdale Dr - McCorkle to Sidney  
Sidney Rd - Raines to Crescent  
Stevens Cr - McCorkle to Brownlee

## Subdivision: Elliston Heights Subdivision

Birdsong Av - Silver to Sparks  
Cane Rd - Perry to End  
Corry Rd - Warren to Elliston  
Dunnhaven St - Dunn to End  
Merlin Av - Perry to Warren  
Raven Av - Sparks to Warren  
Silver Pl - Dunnhaven to End  
Silver St - Dunn to Raven  
Sparks Cv - Sparks to End  
Sparks St - Birdsong to Merlin; Cane to Mallory  
Starr Av - Corry to Warren  
Warren Av - Dunn to Starr

## Subdivision: Greentrees Subdivision

Black Oak Dr - Hickory Crest to River Birch  
Dove Roost Cv - Hickory Crest to Dead End  
Hickory Crest Cv - Hickory Crest Dr to Dead End  
Hickory Crest Dr - Kirby Pkwy to Messick Rd  
Honey Locust Cv - Hickory Crest Dr to Dead End  
Paper Birch Ln - Thornwood Ln to Paper Birch Cv  
Post Oak Cv - Thornwood to Dead End  
Red Gum Cv - Hickory Crest Dr to Dead End  
River Birch Rd - Hickory Crest to Black Oak  
Robin Perch Cv - Hickory Crest to Dead End  
Satinwood Cv - Satinwood Dr to Dead End  
Satinwood Dr - Poplar Pike to Hickory Crest  
Silver Maple Cv - Black Oak to Dead End

Slash Pine Cv - Satinwood to Dead End  
Sugar Maple Cv - Black Oak to Dead End  
Sunburst Cv - Thornwood to Dead End  
Talisman Cv - Hickory Crest to Dead End  
Tangleberry Cv - Hickory Crest to Dead End  
Tangleberry Ln - Kirby Pkwy to Hickory Crest  
Thornwood Ln - Wildberry Ln to Hickory Crest Dr  
White Ash Cv - Thornwood to Dead End  
Wildberry Ln - Kirby Pkwy to Hickory Crest

Subdivision: Heritage Estates

Apple Blossom Dr - Clarke Rd to Jasmine Dr  
Apricot Cv - Flowering Peach to Dead End  
Blossom Ln - Crepe Myrtle to Wax Myrtle  
Box Elder Cv - Tulip Tree to Dead End  
Briar Pl - Maple Tree to Dead End  
Camelia Cv - Flowering Peach to Dead End  
Cedar Path - Winter Tree Dr to Maple Tree Dr  
Clarke Rd - Myers to Maple Tree  
Contractors Pl - Flowering Peach to Dead End  
Crepe Myrtle - Wax Myrtle to Dead End; Clarke Rd to Dead End  
Fann Rd - Winchester to Lowry  
Firethorne Dr - Myers to Dead End  
Flowering Peach Cv - Flowering Peach to Dead End  
Flowering Peach Dr - Clarke to Mendenhall Rd  
Heather Ridge Dr - Tulip Tree Dr to Dead End  
Hyacinth Cv - Hyacinth Dr to Dead End  
Hyacinth Dr - Tulip Tree to Dead End; Apple Blossom Dr to Dead End  
Ironwood Dr - Myers to Dead End  
Jasmine Cv - Jasmine Dr to Dead End  
Jasmine Dr - Apple Blossom to Dead End  
Lowry - Firethorne Dr to Dead End  
Maple Leaf Cv - Apple Blossom to Dead End  
Maple Tree Dr - Cedar Path to Clarke Rd  
Myers Rd - Hickory Hill Rd to Clarke Rd  
Pathway Cr - Clarke Rd to Winter Tree  
Pinbranch Ct - Maple Tree to Dead End  
Shagbark Ct - Pathway Cr to Dead End  
Shallow Wood Ct - Pathway Cr to Dead End  
Tulip Tree Dr - Firethorne to Heather Ridge  
Wax Myrtle - Tulip Tree to Crepe Myrtle  
White Birch Dr - Myers to Dead End  
Winter Flower Dr - Myers to Winter Tree  
Winter Tree - Pathway Cr to Cedar Path Dr  
Woodbourne Ct - Cedar Path to Dead End

Subdivision: Kirby Meadows

Brownbark - Winchester to Norfield  
Greenbark - Hallshire to Dead End  
Greenridge - Split Oak to Dead End  
Hallshire - Norfield to Greenbark

Hampstead - Kirby Meadows to Dead End  
Imperial Oaks - Kirby Meadows to Dead End  
Ivy Meadows - Kirby to Kirby  
Kirby Arms - Kirby Valley to Dead End  
Kirby Brooks - Kirby Valley to Kirby Terrace  
Kirby Center - Kirby to Dead End  
Kirby Meadows - Split Oak to Imperial Oak  
Kirby Mills - Kirby Terrace to Dead End  
Kirby Terrace - Winchester to Dead End  
Kirby Valley - Valley Park to Dead End  
Norfield - Hallshire to Brownbark  
Oak Creek - Kirby to Dead End  
Split Oak - Kirby to Kirby Meadows  
Valley Park - Kirby to Kirby Terrace  
Wesfield - Split Oak to Valley Park  
Winchester Pointe - Brownbark to Dead End

Subdivision: Mallard Ridge Subdivision

Barkshire Rd - Mallard Nest to Dead End  
Blue Wing St - Gadwall N to Goldeneye Dr  
Bluebill Cv - Mallard Nest to Dead End  
Duckling Cv - Mallard Nest to Dead End  
Gadwall Dr - Blue Wing to Goldeneye  
Goldeneye - Waterfowl to Gadwall N  
Mallard Ridge Dr - Shelby to Barkshire  
Mallards Nest - Shelby Dr to Blue Wing St  
Old Squaw Cv - Barkshire to Dead End  
Pintail Cv - Barkshire to Dead End  
Stoney Hill Cr  
Waders Rdige Dr - Water Fowl to Barkshire  
Water Fowl Ln - Waders Ridge to Goldeneye

Subdivision: Richmond Square Subdivision

Blackwell Rd - Memphis City Limit to Dead End  
Bluemont Dr - Fernleaf Av to Longacre Rd  
Blueridge Dr - Gatewood to Dead End  
Branwood Cv - Longacre to Dead End  
Brydon Dr - Wood Thrush to Dead End  
Canyon Rd - Stage Rd to Scrivener  
Chaucer Ln - Fieldcrest to Dead End  
Chowning Rd - Scrivener to Dead End  
Dare Av - Lynchburg to Keats  
Drayton Woods - Fieldcrest to Wythe  
Fernleaf Av - Covington Pike to Dead End  
Fieldcrest Av - Lynchburg to Old Brownsville Rd  
Gatewood Dr - Fernleaf to Rolling Fields; Patrick Henry to Scrivener  
Glen Logan Rd - Lynchburg to Craigmont  
Keats - Patrick Henry to Dare  
Kemel - Wood Thrush to Dead End  
Longacre Av - Keats to Covington Pike  
Longacre Cv - Longacre to Dead End

Lynchburg - Yale to Stage  
Oriole Cv - Canyon to Dead End  
Patrick Henry - Old Brownsville to Gatewood  
Rolling Fields Dr - Gatewood to Canyon  
Rolling Meadows Dr - Gatewood to Lynchburg  
Ruskin Cv - Craigmont to Dead End  
Ruskin Rd - Fieldcrest to Craigmont  
Scrivener - Gatewood to Wythe  
Stardust Cv - Stardust to Dead End  
Stardust Dr - Wythe to Gatewood  
Steuben - Craigmont to Wythe  
Towhee Cv - Canyon to Dead End  
Wax Wing - Wood Thrush to Canyon  
Wood Thrush Cv - Wood Thrush to Dead End  
Wood Thrush Dr - Brydon to Dead End  
Wren Cv - Canyon to Dead End  
Wythe - Craigmont to Fieldcrest; Scrivener to Patrick Henry

Subdivision: Ridgegrove Subdivision

Aline Rd - Hawkins Mill to End  
Beacon Hill Dr/Cv - Callie to Mirror  
Callie Rd - Beacon Hill to Ryan  
Dakar Av - Suncrest Dr to Range Line  
Haisch Rd/Cv - Sunny View Dr to Aline Rd  
Maverick Rd - Sunnybrook to Range Line  
Mirror Rd/Cv - Beacon Hill to Rangeline  
Racheal Rd - Smith Ridge to Haisch  
Range Line Rd - Smith Ridge to Maverick  
Ryan Rd - Dakar to Smith Ridge  
Smith Rdige Rd/Cv - Aline to Range Line  
Suncrest Dr - Hawkins Mill to Sunny Hill  
Sunny Cv - Sunnyview to Dead End  
Sunny Hill - Sunny View to Sunnybrook  
Sunny View Dr - Suncrest to Sunny Hill Dr  
Sunnybrook - Sunny Hill to End

Subdivision: Sweetbriar Block

Lake Tide Cv - Lake Tide to Dead End  
Manor Cv - Sweetbriar to Dead End  
Redfearn Cv - Sweetbriar to Dead End  
River Oaks Cv - River Oaks Rd to Dead End  
River Oaks Rd - Shady Grove to Sweetbriar  
Sweetbriar Rd - Briarcrest to Shady Grove  
Wild Oaks Dr - Sweetbriar to Wild Maple  
Wood Trail Dr - Sweetbriar to Dead End

Year Scheduled: 2019

Location	Funding Source	CD#	Zone	Lane Miles
Raleigh-Bartlett Meadows	In-House	1	C	16.79
Bartlett - Summer to RaLeigh LaGrange	In-House	1	C	3.07
Elmore Trace Subdivision	In-House	1	C	4.59
Convington Way - Convington Pike to Elmore	In-House	1	C	1.34
Chickering - Germantown to Dexter	In-House	2	C	1.44
Sycamore View - Macon to Summer	In-House	2	C	5.63
Mendenhall - Winchester to Raines	In-House	3	D	6.47
Millbranch Rd - Riverbrook to City Limit	In-House	3	B	8.19
Park - Goodlett to Mt. Moriah	In-House	4	D	8.74
Park - Semmes to Goodlett	In-House	4	B	11.41
Colonial Estates	In-House	4	D	16.49
Rolling Acres Subdivision	In-House	4	B	2.49
Democrat Rd - Tehulahoma to Lamar	In-House	4	B	2.80
Greer - Southern to Central	In-House	5	A	1.13
Goodlett - Southern to Park	In-House	5	D	2.88
Highland - Poplar to Central	In-House	5	A	1.28
Lucibill - Brooks to Winchester	In-House	6	B	1.01
Florida St - South Pkwy to Belz	In-House	6	B	3.46
Island Dr - Mud Island Dr to AW Willis	In-House	7	A	5.70
Firestone - Thomas to Breedlove	In-House	7	A	4.09
Central - Cooper to Lamar	In-House	7	B	6.04
Vollintine Ave - Bellevue to Springdale	In-House	7	A	7.74
			Sum Lane Miles:	122.78

# Subdivision Street List

---

## Subdivision: Colonial Estates

Amboy Rd - S Perkins to Verne  
Chip Rd - S Perkins to Marcia  
Crossover Ln - Park Av to Fairmeadow Rd  
Dearing Rd - Marcia to Flamingo; Marcia to Quince  
Dee Rd - Colonial to Fairmeadow  
Fairmeadow Rd - Park Av to Tall Trees Dr  
Flamingo Rd - Quince to Colonial  
Kaye - Colonial to Perkins  
Kings Park Rd - Fairmeadow to Dee  
Kingsbrook Rd - Fairmeadow Rd to Dead End  
Marcia Rd - Quince to Kaye  
Monaco Rd - Verne to Amboy  
Perkins Cv - Perkins to Dead End  
Perkins Te - Perkins to Flamingo  
Sea Isle Rd - Colonial to Quince  
Tall Trees Cr - Tall Trees to Dead End  
Tall Trees Dr - Cherry to Fairmeadow  
Verne Rd - Flamingo to Perkins  
W Perkins - Perkins to Flamingo

## Subdivision: Elmore Trace Subdivision

Charles Bryan Cv - Charles Bryan to Dead End  
Eagan - Elmore to Dead End  
Elmore Cv - Elmore to Dead End  
Elmore Ridge - Charles Bryan to Dead End  
Elmore Woods - Morning Vista to Dead End East  
Elmore Woods - Morning Vista to Dead End West  
Hartford - Morning Vista to Elmore  
Morning Vista - Elmore to Dead End  
Reese - Whitten to Dead End  
Whitten Grove - Charles Bryan to Dead End

## Subdivision: Raleigh-Bartlett Meadows

Bluefield St - Stage to Dead End  
Casann Av - Westelle to Schiebler  
Casann Cv - Josyln to Dead End  
Cela Rd - Old Raleigh LaGrange to Dead End  
Craigmont Cv - Craigmont to Dead End  
Craigmont Dr - Bluefield to Earl  
Darby St - Quintell to Dead End  
Earl Dr - Plato to Edgemont  
Earnett St - Priscilla to Quintell  
East Rd - Raleigh LaGrange to Stage  
Edgemont Av - Magveney to Earl  
Fayette Rd - Austin Peay to Hammond  
Hammond Rd - Old Raleigh LaGrange to Dead End  
Hoover Dr - RaLeigh LaGrange to Northfield  
Jasper Av - Bluefield to Darby  
Joslyn Cv - Josyln to Dead End



Joslyn St - Craigmont to Quintell  
Kamali Ct - Hammond to Hammond  
Kenmar Cv - Kenneth to Dead End  
Kenneth St - Craigmont to Quintell  
Lockwood Cv - Coleman to Dead End  
Magevney St - Craigmont to Plato  
Old Raleigh Lagrange Rd - East to Raleigh LaGrange  
Parkwood Rd - Coleman to Dead End  
Plato Av - Earl to Magveney  
Priscilla Av - Coleman to Kenneth; Darby to Bluefield  
Quintell Av - Bluefield to Dead End  
Robbiedon St - Quintell to Stage  
Rolling Fields Dr - Josyln to bluefield  
Tanbark Av - Coleman to Magevney  
Velmagi St - Casann to Kenneth  
Wade St - Priscilla to Quintell  
Westelle St - Casann to Craigmont

Subdivision: Rolling Acres Subdivision

Denise St - Wendy Dr to Dead End  
Johanna Dr - Alcy Rd to Dead End  
Judson Dr - Alcy Rd to Wendy  
McRae - Alcy Rd to Dead End  
Patrick Rd - Judson St to Johanna Dr  
Sherrie St - Alcy Rd to Dead End  
Wendy Dr - Judson St to Dead End

Year Scheduled: 2020

Location	Funding Source	CD#	Zone	Lane Miles
Overton Crossing - Whitney to Frayser	In-House	1	A	3.30
Appling Glen Subdivision	In-House	1	C	2.55
Fletcher Trace Subdivision	In-House	1	C	4.62
Walnut Grove Lake Subdivision	In-House	2	C	3.52
Sanga - Walnut Grove to County Line	In-House	2	C	0.61
Whitten - Macon to Mullins Station	In-House	2	C	2.09
Whitehaven Hills Subdivision	In-House	3	B	5.09
Wooddale Subdivision	In-House	3	D	6.23
Whitehaven View Subdivision	In-House	3	B	6.41
Apple Tree Dr - Hickory Hill to Mt. Moriah	In-House	3	D	1.16
Fairlawn Subdivision	In-House	4	B	3.79
Graham - Goodlett to Summer	In-House	5	A	3.11
Colonial - Willow to Park	In-House	5	D	5.82
Rosebrough Subdivision	In-House	5	A	15.10
Spring St - Jackson to Faxon	In-House	5	A	0.87
New South Memphis Blk	In-House	6	B	8.33
Mitchell - Ford to Weaver	In-House	6	B	1.64
Breedlove - Chelsea to Jackson	In-House	7	A	1.64
Chelsea - Warford to Holmes	In-House	7	A	3.51
Peabody - Cleveland to Diane	In-House	7	A	5.21
Jefferson - Cleveland to Riverside	In-House	7	A	11.24
Shirley Park Subdivision	In-House	7	A	8.22
			Sum Lane Miles:	104.06

# Subdivision Street List

---

## Subdivision: Appling Glen Subdivision

Appling Crest - Appling Mill to Dead End  
Appling Estate - Appling to Appling Crest  
Appling Glen - Appling to Appling Mill  
Appling Mill - Appling Glen to Appling Crest  
Arboregreen - Spinola to Dead End  
Austin Green Bay - Appling Glen to Kristywood  
Kristywood - Austin Green Bay to Dead End  
Spinola - Appling Crest to Dead End

## Subdivision: Fairlawn Subdivision

Armistead Av - Southwall to Wildrose  
Brewer Av - Wildrose to Mourfield  
Heber Av - Southwall to Mourfield  
Lounette St - Armistead to Wildrose  
Sharpe Av - Robinwood to Ellsworth  
Southwall Cv - Southwall to Dead End  
Southwall St - Semmes to Dempsy

## Subdivision: Fletcher Trace Subdivision

Appling Farms Rd - Pate to Appling  
Burnstown Ln - Pate to Dead End  
Dove Glen Cv - Valley Glen to Dead End  
Fletcher Glen Dr - Valley Glen to Dead End  
Glenfield Cv - Green Glen to Dead End  
Green Glen Dr - Reese to Valley Glen  
Holly Glen Cv - Green Glen to Dead End  
Pate Rd - Appling Rd to Reese  
Port Albert Ln - Pate to Dead End  
Tory Hill Ln - Pate to Dead End  
Val Marie Ln - Pate to Dead End  
Valley Glen Dr - Pate Rd to Wolf Hollow Dr  
Wolf Hollow Dr - Valley Glen to Kate Bond  
Wolfden Cr - Valley Glen Dr to Wolf Hollow Dr

## Subdivision: New South Memphis Blk

Davant - Kentucky to Third  
Fair View Cv - Davant to Castex  
Fernwood - Florida to Third  
Frank - Third to Kentucky  
Gage - Third to Kentucky  
Kentucky - Kansas to Dead End  
Main - Mallory to Frank  
Mallory Heights - Shelby to Dead End  
McKellar - Third to Kentucky  
Norwood - Third to Dead End  
Rosie - Florida to Shelby  
Shelby - Mallory to Rosie

## Subdivision: Rosebrough Subdivision

Biltmore St - Macon to Dead End

Buchanan Av - Jackson to Highland  
Cicalla Av - Jackson Av to Panama St  
Fairoaks Av - Jackson to National  
Farmville Rd - Jackson Av to Gordon St  
Gordon St - Macon to Dead End  
Highland St - Macon Rd to Rockwood Av  
Holmes St - Macon to Rosamond  
Kallaher - Jackson to National  
Mayfair Av - Jackson to National  
Mayflower Av - Jackson to Homer  
Panama St - Macon to Cicalla  
Peachtree St - Farmville to Buchanan  
Roasamond Av - Jackson to Panama; National to Highland  
Rockwood Av - Jackson to Homer  
Vernon Av - Jackson to Homer

Subdivision: Shirley Park Subdivision

Dawn Dr - Par to Juliet  
Frayser Blvd - Dawn to Thomas  
Frayser Cr - Dawn to Thomas  
Frayser Dr - Dawn to Benjestown  
Gilliland Av - Hillis to Thomas  
Greendale Cr - Westside to Frayser  
Hillis St - Greendale Cr to Shirley Cr; Marsh to Whitney  
Juliet Av - Morningside to Dead End  
Morningside St - Marsh to Frayser  
Northgate St - Whitney to Marsh  
Shirley Cr - Marsh to Marsh  
Sunrise St - Marsh to Frayser  
Westside Dr - Greendale to Dawn

Subdivision: Walnut Grove Lake Subdivision

Almstead - Bazemore to Dead End  
Arendal - Ericson to Dead End  
Bergen - Bazemore to Ericson  
Bergen - Ericson to Dead End  
Ericson - Walnut Grove to Bazemore  
Ericson Cv - Ericson to Dead End  
Karistad - Mysen to Dead End  
Leif - Ericson to Dead End (Both directions)  
Loften Cv - Ericson to Dead End  
Mysen - Walnut Grove to Ericson  
Mysen Cv - Mysen to Dead End  
Narvick - Ericson to Dead End  
Reksten - Bazemore to Dead End  
Sherburne - Bazemore to Dead End  
Thorgenson - Ericson to Dead End

Subdivision: Whitehaven Hills Subdivision

Aquarius - Zodiac to Tchulahoma  
Argot - Sunray to Zodiac  
Comet - Sunray to Dead End

Cosmos - Zodiac to Sputnik; Sputnik to Dead End  
Rendezvous - Sputnik to Sunray  
Skyward - Aquarius to Dead End  
Solar - Sunray to Dead End  
Sputnik - Aquarius to Cosmos  
Sunray - Argot to Rendezvous  
Zodiac - Holmes to Dead End

Subdivision: Whitehaven View Subdivision

Butterworth Rd - Millbranch to Haleville  
Cresser St - Canton Dr to Hester Rd  
Haleville Rd - Holmes Rd to Kirkwood Rd  
Holt Dr - Puryear to Butterworth  
Hutson - Lochnivar to Haleville  
Kirkwood Rd - Millbranch to Haleville  
Leigh Dr - Lochnivar to Haleville  
Lewellen Rd - Lochnivar to Haleville  
Loch Lomond - Wilson to Hutson  
Lochnivar - Haleville to Leigh  
Puryear - Haleville to Rickard  
Rickyard - Puryear to Butterworth  
Wilson - Haleville to Millbranch

Subdivision: Wooddale Subdivision

Bentley Cv - Chuck to Dead End  
Blanding Av - Boxdale to Starsdale  
Blanding Cv - Boxdale Av to Dead End  
Boxdale St - Scottsdale to Chuck  
Charrin Cv - Scottsdale Av to Dead End  
Chuck Av - Perkins to Clearbrook  
Coffee Av - Wooddale to Dead End  
Freland Dr - Sophia to Jenkins  
Jenkins St - Chuck to Wooddale  
Luzon Cv - Scottsdale to Dead End  
Luzon Dr - Chuck to Barksdale  
Shuster Cv - Scottsdale to Dead End  
Sophia St - Chuck to Dead End  
Starsdale - Scottsdale to Wooddale  
Stone - Chuck to Wooddale  
Wooddale Av - Perkins to Clearbrook